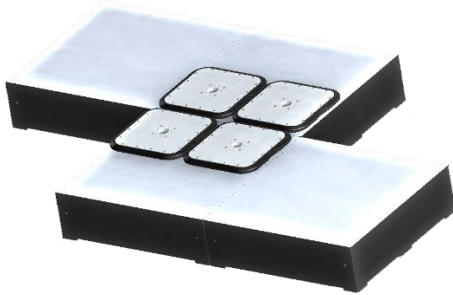


Turnkey System Layouts

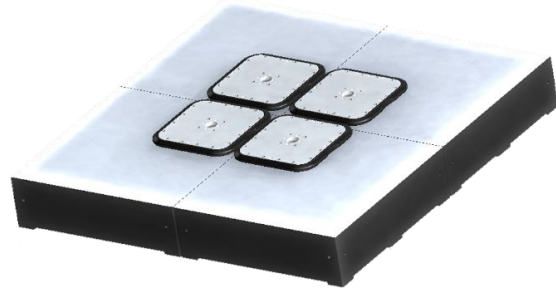
Supported 4-Flyway layouts; only 5 of them are listed:



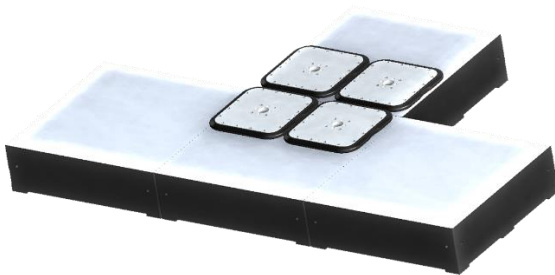
(4A)



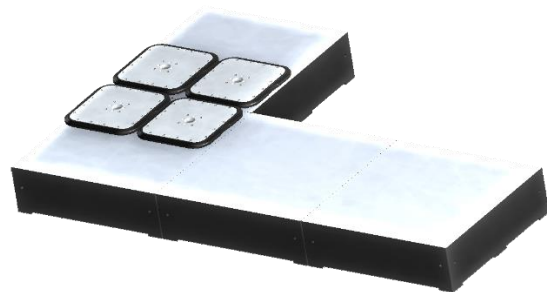
(4B)



(4C)

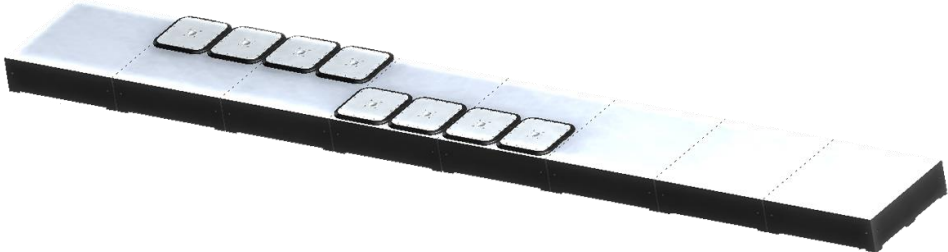


(4D)

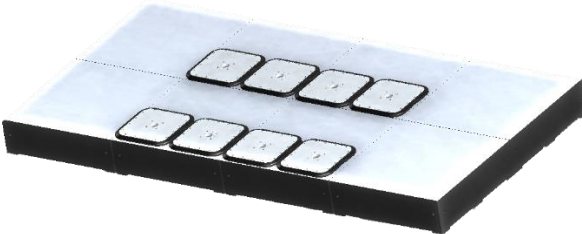


(4E)

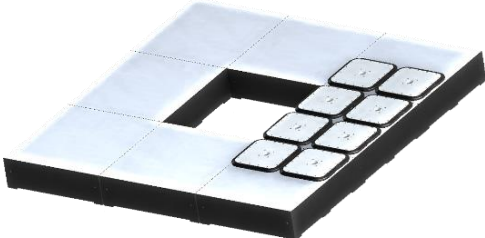
Supported 8-Flyway layouts; only 12 of them are listed.



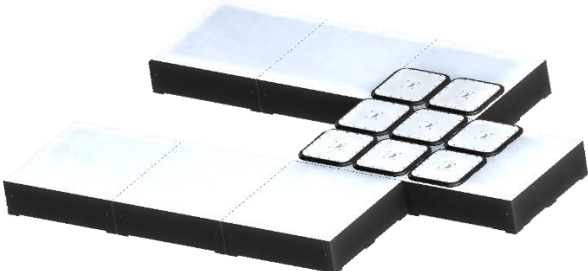
(8A)



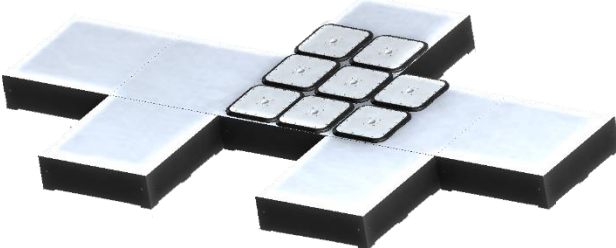
(8B)



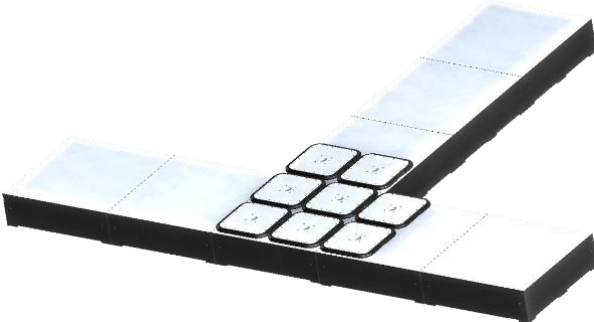
(8C)



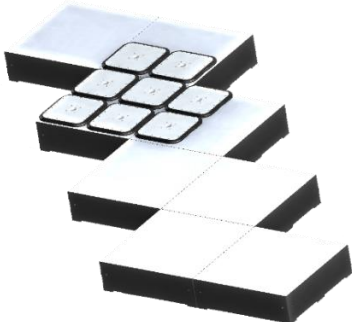
(8D)



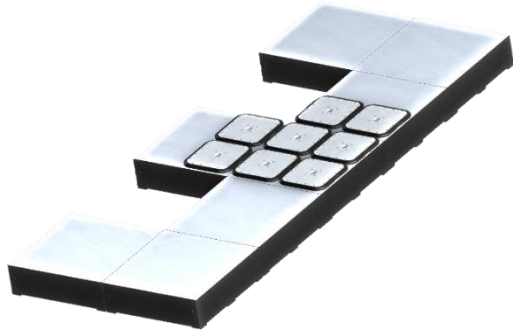
(8E)



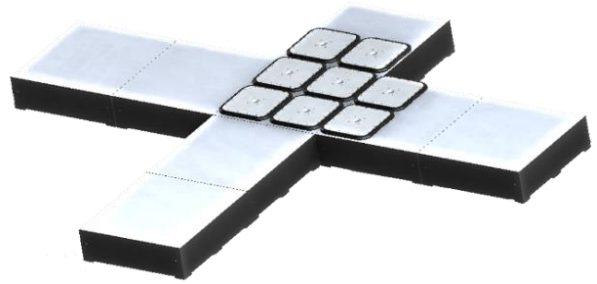
(8F)



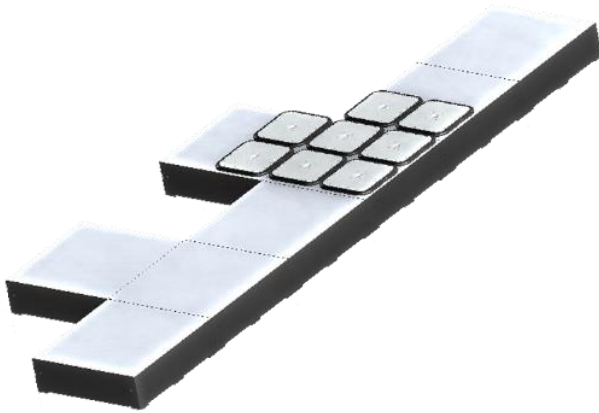
(8G)



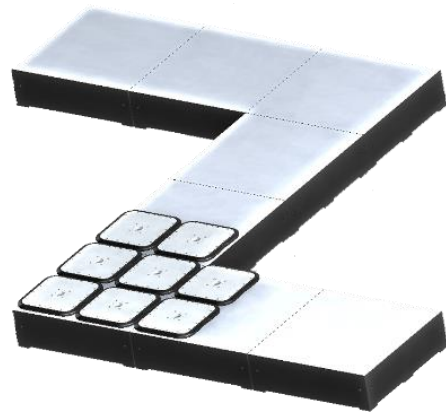
(8H)



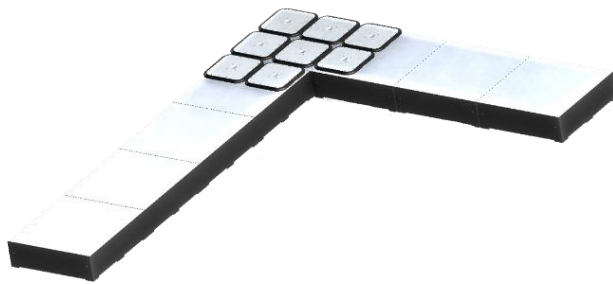
(8I)



(8J)



(8K)



(8L)