

COMMENTS:

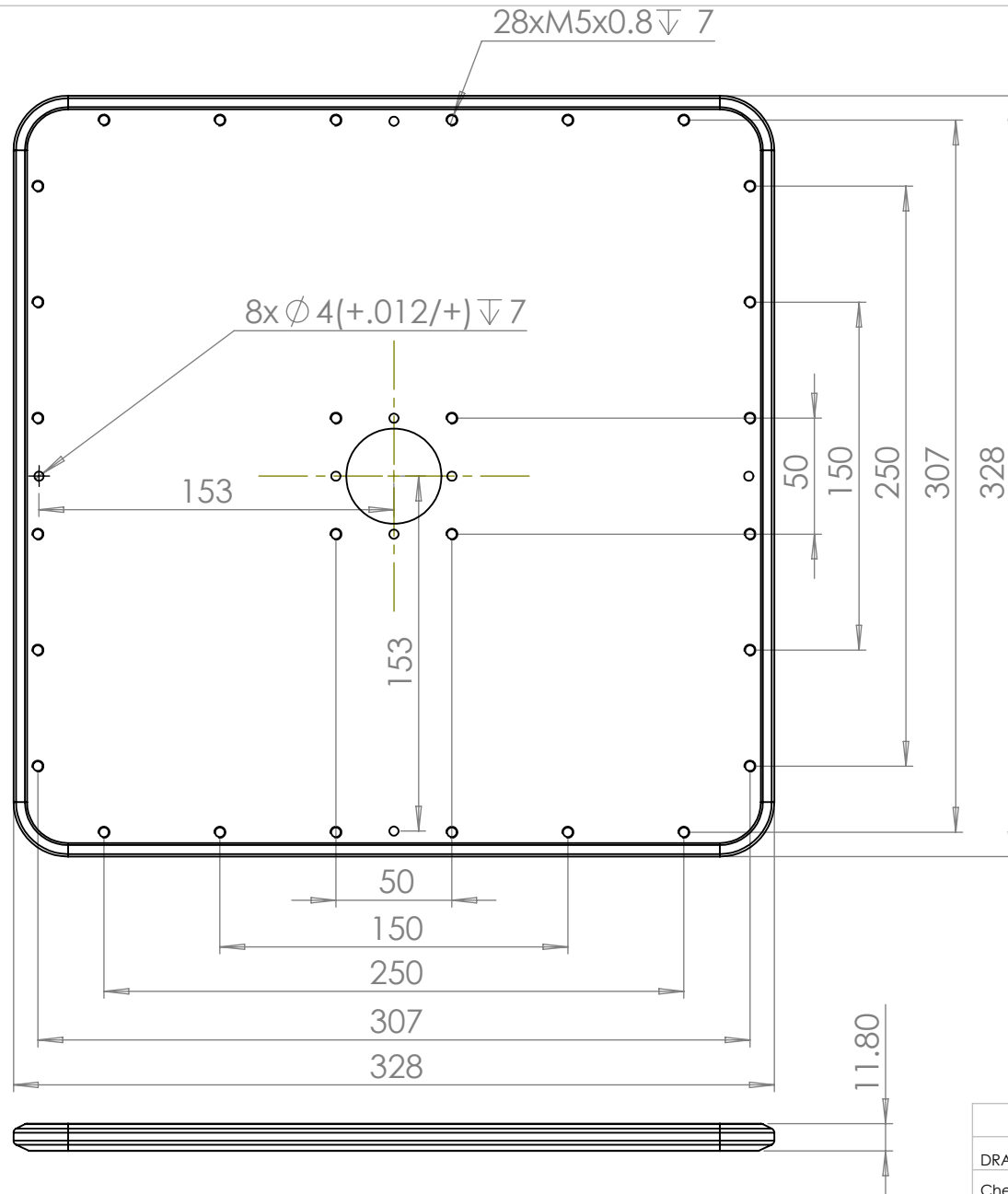
Dimensions and Tolerances per ASME Y14.5M-1994
 Surface texture per ANSI/ASME B46 1 -1985

Projection



Unless Otherwise Specified:

- all dimensions in mm
- All surfaces 63 Ra (1.6 μ m) or better
- Break all corners and edges 0.5 Max
- Tolerances, unless otherwise specified:
 Linear: +/- 0.1
 Angular: +/- 0.5 deg



PROPRIETARY AND CONFIDENTIAL
 THE INFORMATION CONTAINED IN THIS DRAWING IS THE SOLE PROPERTY OF PLANAR MOTOR INCORPORATED AND ANY REPRODUCTION IN PART OR AS A WHOLE WITHOUT THE WRITTEN PERMISSION OF PLANAR MOTOR INCORPORATED IS PROHIBITED.

	NAME
DRAWN	Graham Williamson
Check	Kevin Xiao

TITLE:	
XBOT M3-18	

MATERIAL:
proprietary

SIZE	DWG. NO.
A	M3-18-04, OEM
Don't scale	Sheet 1 of 1